



www.norelco Cabinets.ca

SPACES *for* LIVING



@norelco Cabinets

677 Willow Park Road, Kelowna BC, Canada, V1X 5H9
Phone: 250 765 2121 Toll Free: 1 866 765 1540
sales@norelco Cabinets.ca

Contact us for dealer/distribution/business opportunity in your area
dealersales@norelco Cabinets.ca



NORELCO

C A B I N E T S

SPACES
for LIVING

NORELCO CABINETS

EST 1972

WELCOME TO NORELCO

At Norelco, we understand that it is not just about cabinets. It is about creating a personalized living space that will tell your story and show your style. It is a journey that will bring your dream to reality and it involves thorough planning and preparation. And to reach that goal, it requires someone that can share your vision while providing the essential design and technical guidance.

That is what we are here for. We will help you along every step of that journey.

FROM OUR PRESIDENT

It is an honour and a privilege to serve as President of Norelco Cabinets and lead a talented and award-winning team of professionals committed to serving our clients with excellence as we celebrate 50+ years in the industry. We manufacture exceptional cabinetry and I am extremely proud of what we have been able to accomplish within the industry with our craftsmanship.

We are experts in finding inspired and innovative solutions and will collaborate with you to dream and create your unique living space. Every day our team focuses their care and attention to ensuring your cabinetry will not only meet, but will exceed your expectations. That is our passion and every team member is on this mission.

Known for our dedication and commitment to our craft, we are proud to be a high volume manufacturer that is able to produce custom cabinetry for our customers across Western Canada and the US from our plant in the Okanagan. We only use the highest quality construction techniques and materials to ensure that our client's spaces stand the test of time.

I cannot express how much we appreciate the trust and confidence that our clients have placed in us. I invite you to contact us to discuss how we can serve your needs and welcome you to become one of our highly satisfied customers.

We look forward to meeting you!

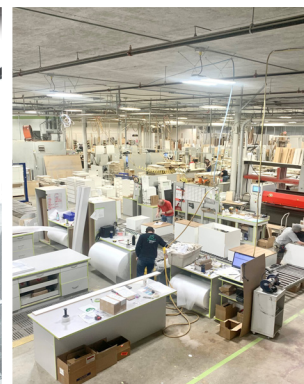
Sincerely,



PROUDLY INTERNATIONAL



VISIT OUR SHOWROOM AT 677 WILLOW PARK ROAD, KELOWNA BC, CANADA





Kitchen: Paint Grade Maple / Mission 19 in Classic Gray & Matte Black
Wall Features: Melamine Tafisa in Fashionista
Bathroom/Bar: Malamine AGT / Slab in Matte Black G2S

WHY CHOOSE NORELCO

At Norelco, our people are our strength and we stand behind our products and workmanship 100%. We are proudly committed to excellence and our primary goal is to ensure complete customer satisfaction by offering solution-driven services with integrity you can trust. We will go above and beyond to make sure your experience is enjoyable and your end product exceeds your expectations.



QUALITY YOU CAN COUNT ON

Norelco Cabinets manufactures quality products, built and designed to give you a lifetime of service and satisfaction. We offer a Lifetime Limited Warranty to the original purchaser that ensures all products manufactured and sold by us are free from defects in material and workmanship.

SOCIALLY RESPONSIBLE

As active members of the Kelowna Chamber of Commerce, The Canadian Home Builders' Association and of the Canadian Kitchen Cabinet Association, we are supporting the drive to carry out many of the initiatives and special projects on behalf of these highly regarded community involved associations.

Norelco Cabinets... helping to make a difference!



Kitchen/Living Room: Paint Grade Maple / Monarch / Egret White
Bathroom: V-Groove Slab / Storm Cloud Grey
Bar: Paint Grade Maple / Monarch / Cheating Heart

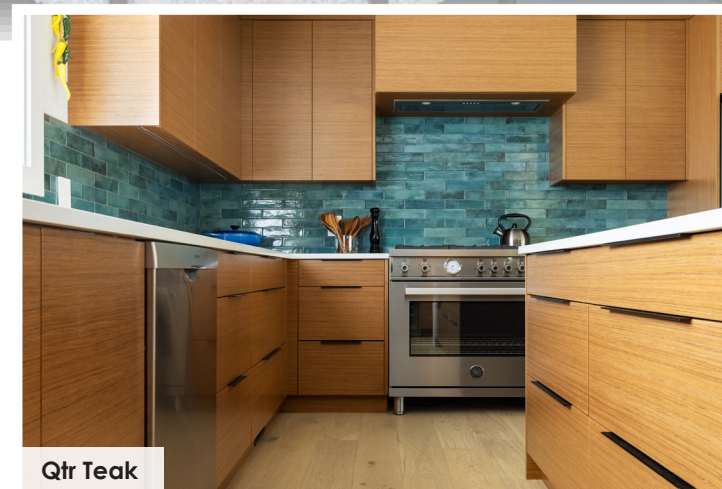
Material: Flat Sawn White Oak & MDF
Finish: Custom Norelco Stain & Matte Black
Crown: 2" Riser



Hickory



Red Oak Flat Sawn



Qtr Teak

SUSTAINABLE FUTURE

Norelco Cabinets is committed to using premium quality material sourced from North America and Europe that improves global sustainability with our advancing products. We source Canadian raw materials and turn them into finish good and export globally, all while promoting green products including reconstituted veneers that removes the need to harvest old growth forests.

Norelco is a Canadian manufacturer that proudly uses many domestic plywoods made in Canada. All of our export material in pro-core has soy-based adhesives eliminating urea-formaldehyde, which drastically reduces the release of VOCs. Norelco uses UFA and CARB II Certification material, along with purchasing products that are part of Built Green British Columbia.



ENVIRONMENTALLY RESPONSIBLE

Norelco is environmentally responsible by offering wood products that are FSC (Forest Stewardship Council) and is dedicated to promoting the preservation of the world's natural wood resources in the harvesting, shipping, and manufacturing processes.





Material: HDF & Melamine Horizontal
Door Style: Shaker (1.75") & Slab
Finish: Classic Gray, Gray 2121-10 & Finsa Roble Niagara

INNOVATIVE PRODUCTS

At Norelco, we are always ahead of the curve with the latest trends so you can count on us to have the latest products on the market. With sweeping horizontal lines, glossy or matte cabinetry, and rich natural or charcoal islands. Modern spaces are a canvas for the 'living' you bring to them — the food, the faces, the cocktails, the laughter. Our lustrous woodgrain custom cabinets, solid finishes and sleek hardware allow you to reflect the now while letting the materials' natural beauty shine through.



Norelco Cabinets is celebrating 50+ years of being a locally owned and operated cabinet manufacturer in Kelowna, BC, Canada. From a small family business to an international exporter with a 60,000 sq.ft. facility, Norelco's manufacturing capabilities meets the quality of expertise in high-end luxury homes, while maintaining the timelines for any large-scale multi-family developments. Our long-lasting and trusted relationships have allowed us to grow to be a leading cabinet manufacturer serving clients throughout the Okanagan, Western Canada/USA, and also the Hawaiian Islands for the past 12+ years.

NORELCO IN HAWAII





Door Style: Custom Nova in Simply White - Paint Grade Maple
Crown: CM-302-00
Countertop: Silestone Statuario
Hardware: French Antique Brass Cup Pull & Norwich Knobs

WE DO RENOVATIONS

The art of reviving an old kitchen brings a unique feeling of accomplishment. For us, a renovation is more than just updating the look; it is an opportunity to recreate a space with endless possibilities - a space for living.

Let us help you with your renovation. From design, to planning, to finished product, we have the experience and expertise to work with you and other professionals to transform your home into your dream.



Before



After

Select Door Styles in Stain and Paint



Regal - 3" Stile and Rail, Hickory, Urban Soho, S&W 25° LAQ



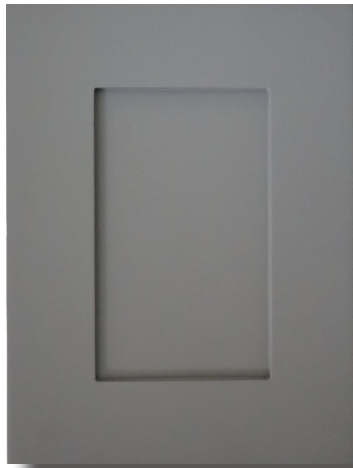
Kali, Rift White Oak, Sand, SW, 10° LAQ



Mission 25, Rift White Oak, #226 c/w 10° LAQ



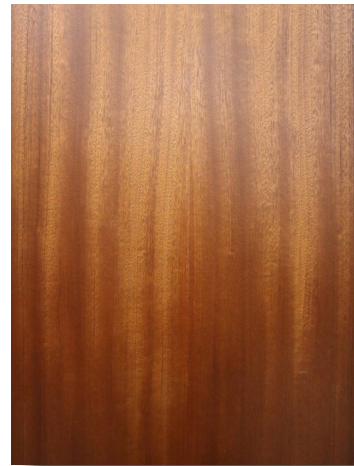
Regal, MDF, Chantilly Lace



Shaker Infinity, MDF, Chelsea Grey



Ivens, PGM, Chimichurri



3/4" Slab, Sapele, Natural, S&W 25° LAQ



Shaker Stepped, Walnut, Natural 10° LAQ



Monarch MR1, PGM, Knoxville Gray cw Black Glaze Brushed

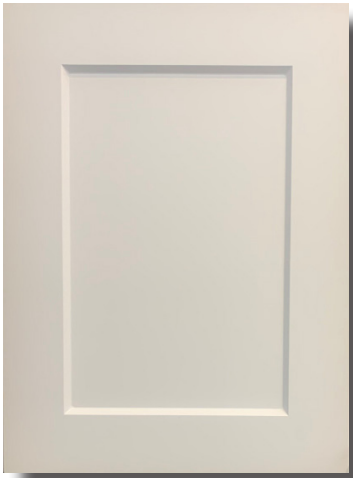


Imperial, PGM, Grey Owl

Shaker 1.75", Red Oak Flat Sawn, Custom Norelco Stain, S&W



Select Foil / Specialty Finishes



Shaker 300, Foil, Textured White



Shaker 100, Foil, Mysterious Blue



Slimline, Foil, Celadon Green, Super Matte



3/4" Slab, Uniboard, Silk



3/4" Slab, Tafisa, Casting At First Light



3/4" Slab, Tafisa, Summertime Blues

Slab, Soho - Stijle, Warm White Gloss



3/4" Slab, Tafisa, Tofino



3/4" Slab, Tafisa, Fashionista



3/4" Slab, Tafisa, First Class

Select Melamine Finishes



Discover our full product range of our available products on our website at www.norelcoabinets.ca



signature collection

A variety of budget-friendly styles and options coupled with our dependable construction and finishing details.



MELAMINE

- 5/8" case construction including shelves & backs
- Frameless cabinet
- Parts are doweled and glued
- *Upgrade - Orion Grey, Folkstone, hardrock maple or prefinished birch plywood



MELAMINE DRAWER

- Entire drawer box made out of 5/8" melamine 5-piece
- *Upgrade - Orion Grey, Folkstone, hardrock maple or prefinished birch plywood



STANDARD UNDERMOUNT SLIDES

- Slides are concealed by the drawer box
- Undermount soft close slides



cucina collection

This line features birch cabinet construction and a more extensive offering of hardware and finishing options.



IMPORTED BIRCH PLYWOOD

- 5/8" prefinished plywood case construction including shelves & backs
- Frameless cabinet
- Parts are doweled and glued



BIRCH PLY DRAWER

- 5/8" birch plybox
- 5/8" birch bottom panel



UNDERMOUNT SLIDES MOVENTO BLUM

- Slides are concealed by the drawer box
- Blum Movento undermount soft close
- Blue Movento integrated soft close hinges



island collection

Our premium line offers superior quality construction along with unlimited flexibility in finishing and top-of-the-line hardware



PLY DOMESTIC BIRCH PLYWOOD

- 3/4" prefinished plywood case construction including shelves & backs
- Frameless cabinet
- Parts are doweled, screwed and glued



DOVETAIL DRAWERS

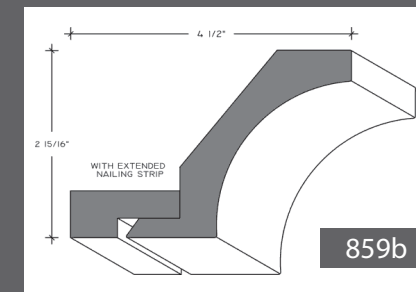
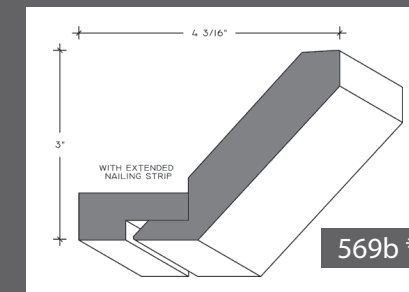
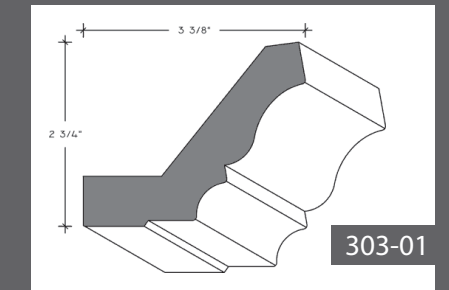
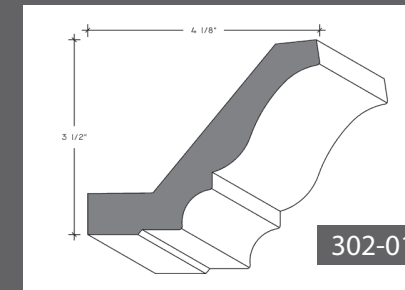
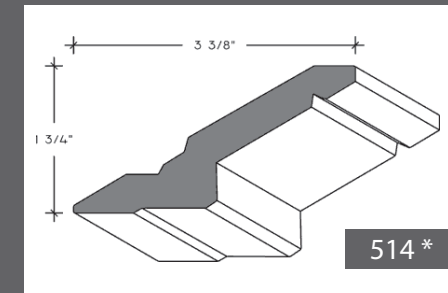
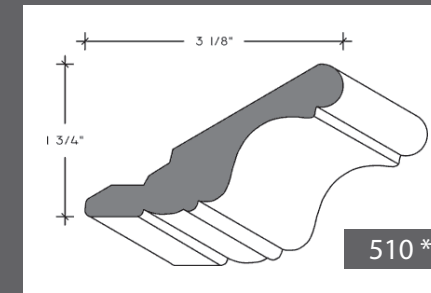
- 3/8" solid birch sides, front and back
- 3/8" birch panel bottom

box construction options

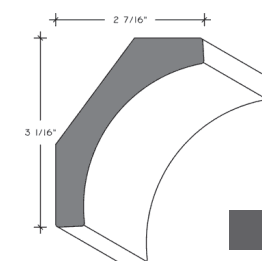
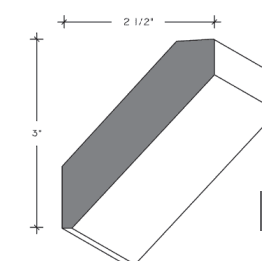
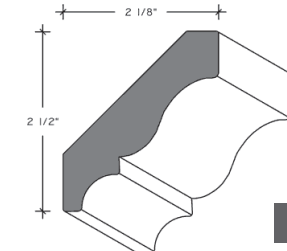
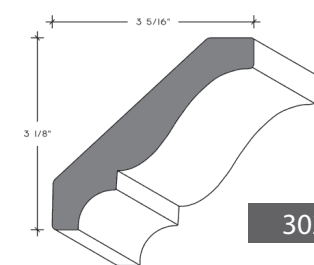
drawer construction options

slide options

cabinet crown mouldings



CROWNS



CORNICE CROWNS

* available in foil

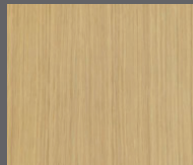
wood characteristics



MAPLE is known for its sheer adaptability, and has a smooth, fine grain that accepts colour well. No matter what the style, it will blend seamlessly with the rest of your kitchen.



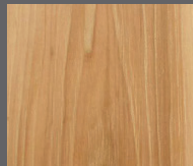
OAK has a coarse texture that can be made more pronounced with a dark stain, or lessened with a lighter stain. It's very durable and doesn't expand with humidity as much as other woods.



RIFT WHITE OAK is more durable, less porous, finer textured, has better color than red oak; it is considered better for furniture and cabinet work.



ALDER has very little grain, is very pale, accepts stains easily, and can easily be colored any shade you'd like. This peach-coloured wood is often substituted for cherry, with a similar tight, even grain, though it is somewhat lighter in appearance.



HICKORY has unique grain patterns that create a wonderful warm color variation which adds not only warmth, but style to any kitchen. This type of wood is mostly used to make kitchen cabinets, but can also serve well as furniture because of its resilience and endurance.



CHERRY has a very smooth, uniform grain and can be stained many shades, but the most common is a deep brown-red. The word cherry comes with reason because it does turn more red over time, especially when exposed to direct sunlight.



WALNUT varies from dark tan to deep chocolate depending on amount of exposure to air prior to drying. Grain varies from very straight to interlocked which produces pronounced figure that may or may not be desirable. Pin knots with small dark centers may be prevalent.



THERMOFOIL & MELAMINE are easy to clean and maintain, and come in a wide range of styles and colors. Whether it's a high gloss look for the contemporary style kitchen or traditional wood grain doors, the possibilities for Thermofoil and Melamine are endless.



ENGINEERED WOOD VENEERS provides endless opportunity in creating the look of the most common, to the most exotic and rare species. These are perfect for contemporary styling while maintaining an eco-friendly balance.

accessories



Spice Dividers



Modulo System - Cutlery Tray



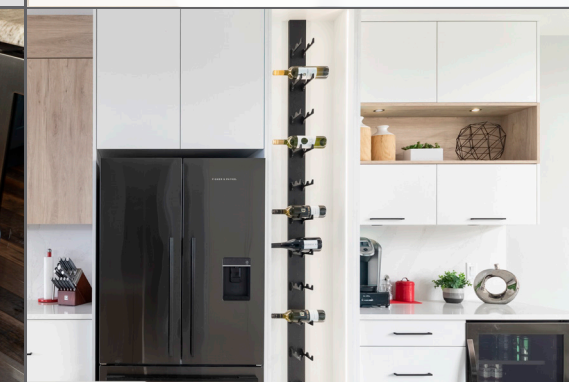
Knife Organizer



Base Filler



LeMans Systems



Liquid Systems



Euro-Cargo System



Base Pullout



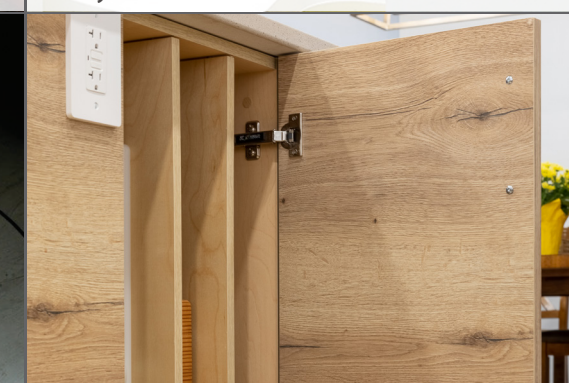
Lazy Susan



Roll Out Shelves



Recycling Center



Tray Dividers